

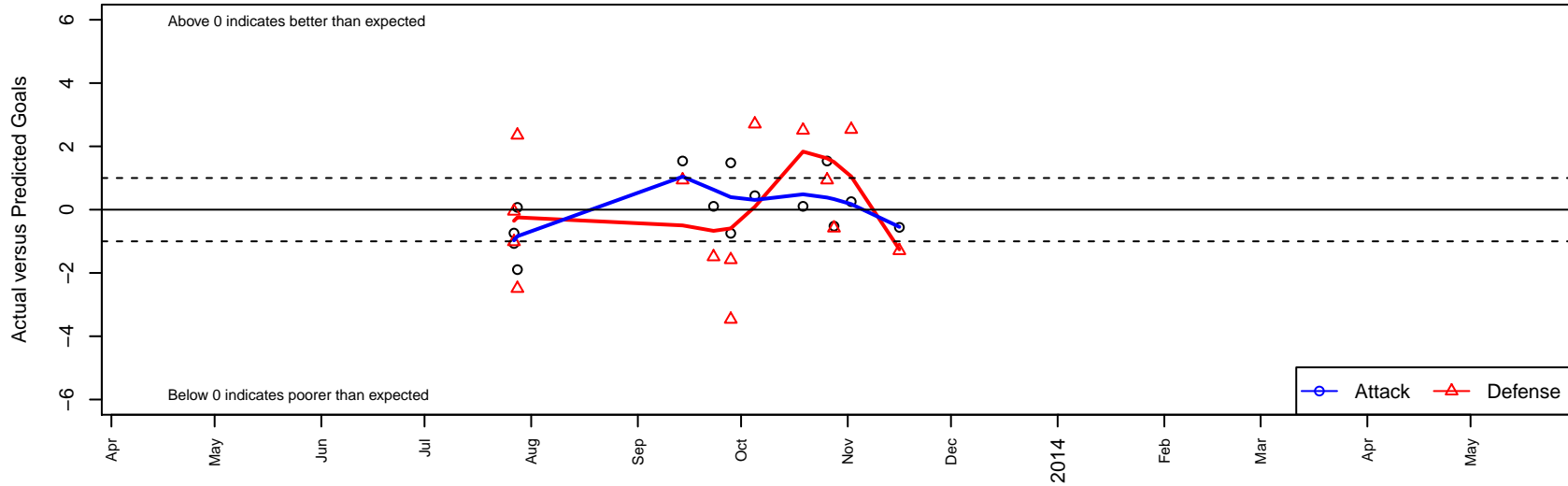
FC Spokane Grey Retan B00

FC Spokane
 Spokane, WA
 B00 total strength=418
 attack=0.47 defense=0.15
 fall league = PSPL-Inland Div 2 U13
 notes= Retan 2012, 2013;
 alt names used:
 FC SPOKANE – RETAN (BU13) (USA)
 FC Spokane B-00 Grey – Retan

Venues played:
 River City Cup Boys U-13 Silver U13
 PSPL-Inland Div 2 U13



FC Spokane Grey Retan B00
 Dots are actual minus expected GF (blue circles) and GA (red triangles).
 Blue line is smoothed change in attack strength. Red is smoothed change in defense strength.



	date	home		away		venue	pred.home	pred.away
18514	2013-11-16	FC Spokane Grey Retan B00	0	Spokane Scotties Manthei B00	8	PSPL-Inland Div 2 U13	0.56	6.70
16823	2013-11-02	Sabers Rau B00	3	FC Spokane Grey Retan B00	2	PSPL-Inland Div 2 U13	5.53	1.75
16530	2013-10-28	FC Spokane Grey Retan B00	0	Cheney Storm Hemenway B00	8	PSPL-Inland Div 2 U13	0.52	7.42
15939	2013-10-26	Sabers Lawton B00	0	FC Spokane Grey Retan B00	5	PSPL-Inland Div 2 U13	0.94	3.46
15005	2013-10-19	FC Spokane Grey B00	2	FC Spokane Grey Retan B00	2	PSPL-Inland Div 2 U13	4.51	1.89
12947	2013-10-05	Spokane Scotties Manthei B00	4	FC Spokane Grey Retan B00	1	PSPL-Inland Div 2 U13	6.70	0.56
11985	2013-09-28	Cheney Storm Hemenway B00	9	FC Spokane Grey Retan B00	2	PSPL-Inland Div 2 U13	7.42	0.52
11987	2013-09-28	FC Spokane Grey Retan B00	1	Sabers Rau B00	9	PSPL-Inland Div 2 U13	1.75	5.53
11713	2013-09-23	FC Spokane Grey Retan B00	2	FC Spokane Grey B00	6	PSPL-Inland Div 2 U13	1.89	4.51
10077	2013-09-14	FC Spokane Grey Retan B00	5	Sabers Lawton B00	0	PSPL-Inland Div 2 U13	3.46	0.94
5003	2013-07-28	FC Spokane Grey Retan B00	0	FC Spokane Grey B00	7	River City Cup Boys U-13 Silver U13	1.89	4.51
5007	2013-07-28	Breakers Derby B00	4	FC Spokane Grey Retan B00	1	River City Cup Boys U-13 Silver U13	6.35	0.93
4742	2013-07-27	FC Spokane Grey Retan B00	0	Kootenay South Storm 2001B	7	River City Cup Boys U-13 Silver U13	1.07	6.95
4745	2013-07-27	FC Spokane Grey Retan B00	0	LFC D'Agnone 2001B	5	River City Cup Boys U-13 Silver U13	0.74	3.99